

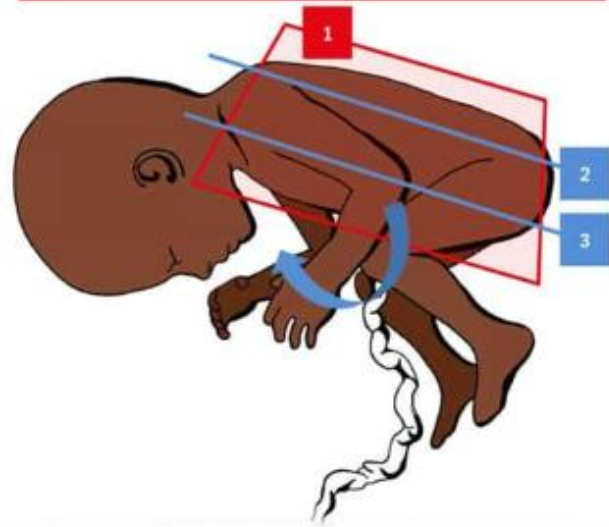


The 20+2 planes **approach to the mid trimester scan**



GUIDELINES

Angle probe through 90°



Plane 1

Sagittal spine with skin covering



Plane 2

Coronal complete spine

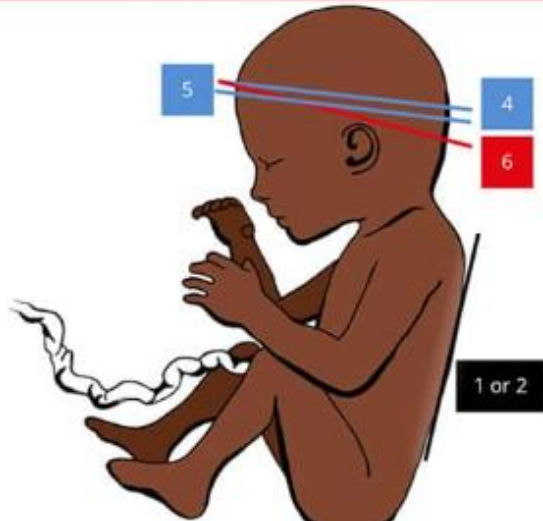


Plane 3

Coronal section of the body

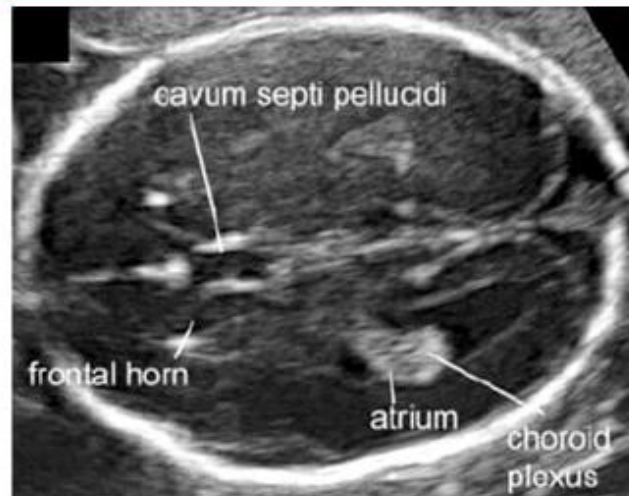


From plane 1 or 2 to 4 - rotate through 90°
From plane 4 to 5 - (rotate &) slide minimally
From plane 4 to 6 - rotate



Plane 4

Transventricular plane



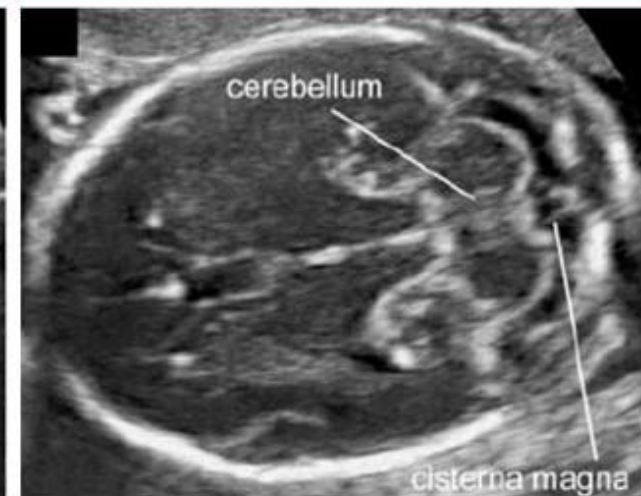
Plane 5

Transthalamic plane

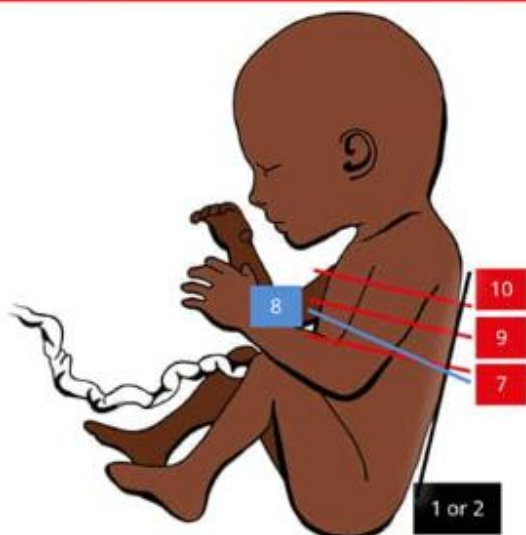


Plane 6

Transcerebellar plane



From plane 1 or 2 to 7 - rotate through 90°
(& slide)
From plane 7 to 8 - rotate towards right shoulder
From plane 7 to 9 - slide towards head
From plane 9 to 10 - slide towards head



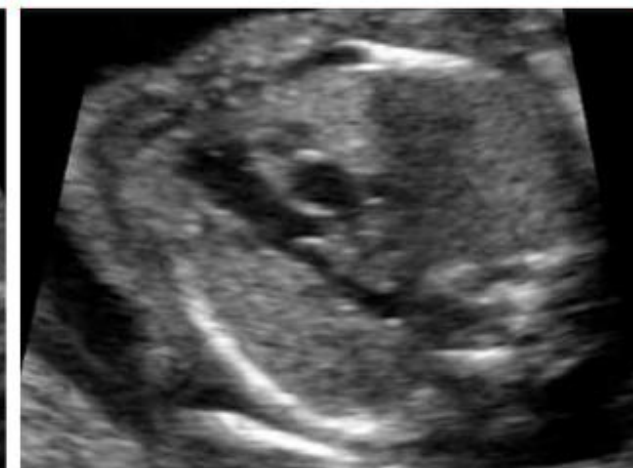
Plane 7
The four chamber view of heart



Plane 8
Left ventricular outflow tract (LVOT)



Plane 9
Right ventricular outflow tract (RVOT)



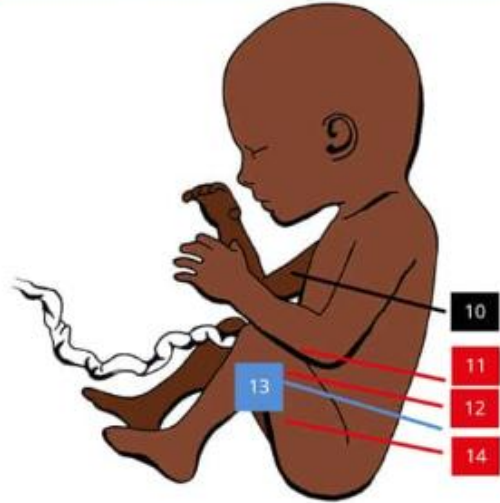
Plane 10
Three vessel trachea (3VT)



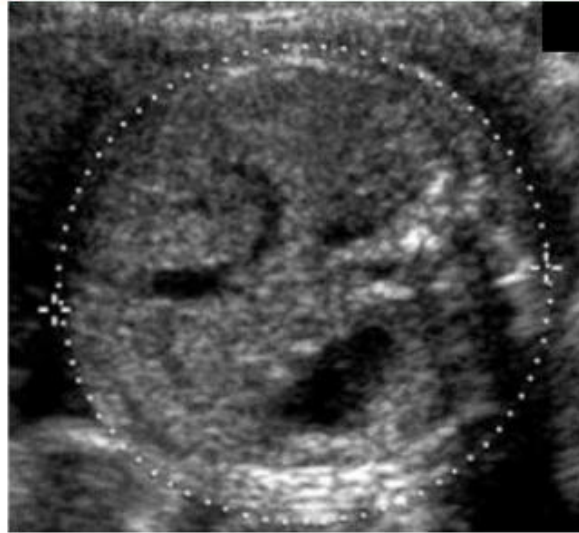
Plane 14
Bladder



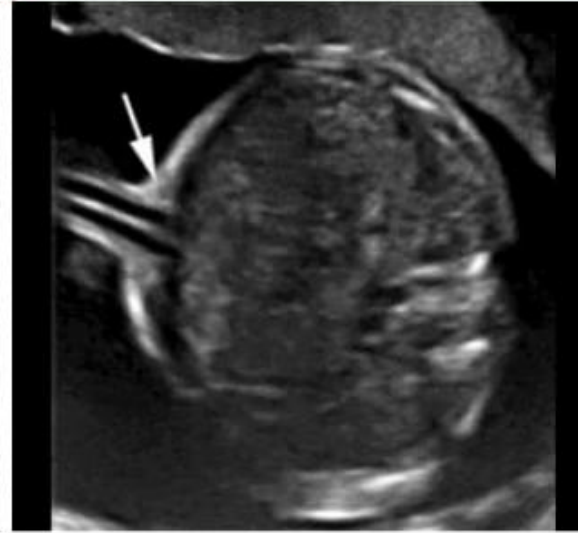
From plane 10 to 11 - slide
 From plane 11 to 12 - slide
 From plane 12 to 13 - slide (+ minimal rotation)
 From plane 12 to 14 - slide



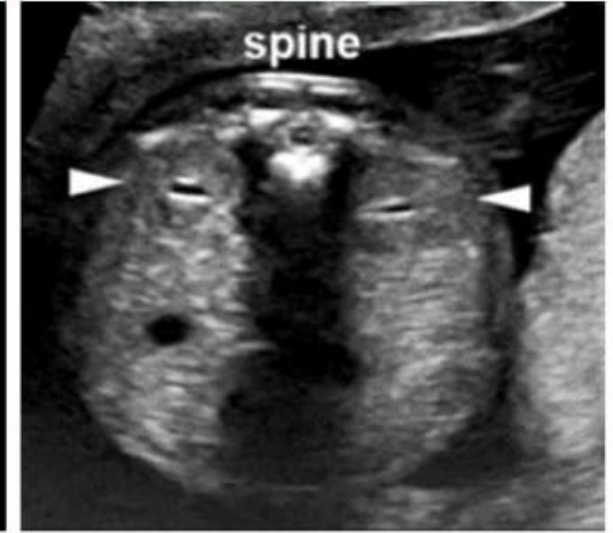
Plane 11
 Abdominal circumference



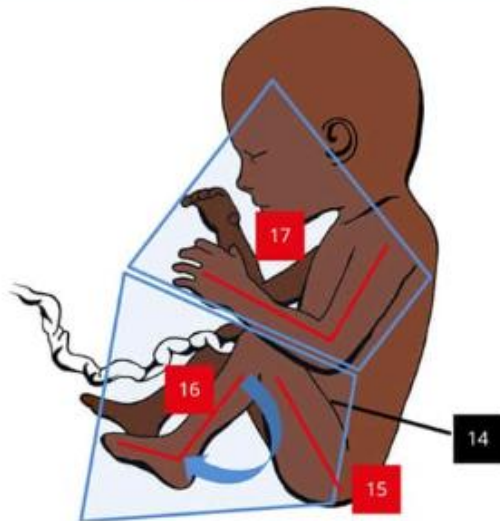
Plane 12
 Cord insertion



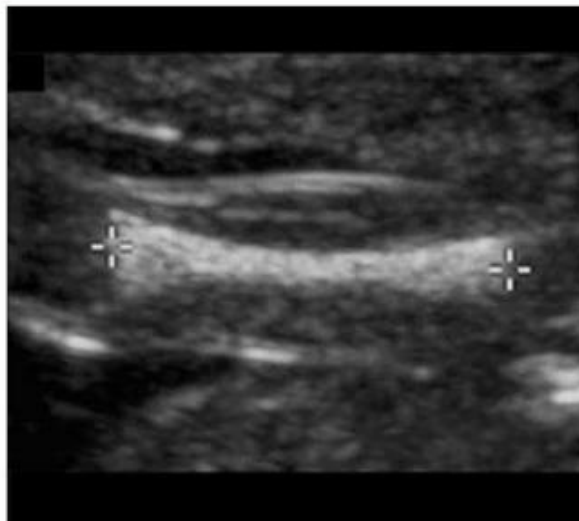
Plane 13
 Kidneys



From plane 14 to 15 - slide & rotate
 From plane 15 to 16 - slide, rotate (& angle)
 From plane 14 to 17 - slide to upper chest, rotate (& angle)



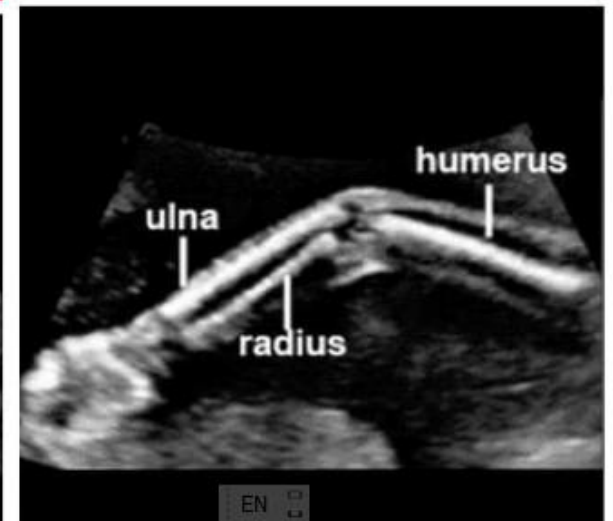
Plane 15
 Femur length



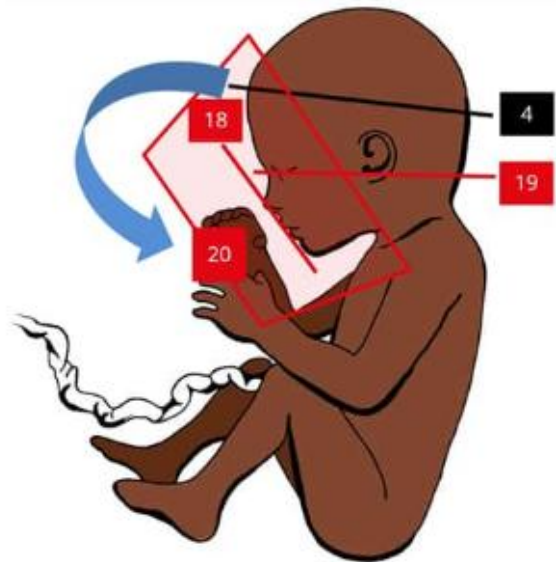
Plane 16
 Femur, tibia and fibula



Plane 17
 Humerus, ulna and radius



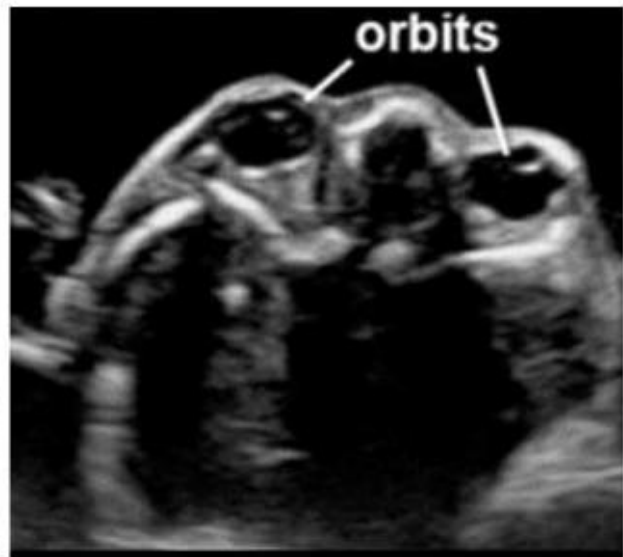
From plane 4 to 18 - slide & rotate 45°-70°
 From plane 4 to 19 - slide (rotate minimal [dip for OP])
 From plane 4 to 20 - slide, angle through 90°
 (& minimal rotation)



Plane 18
 Upper lip, nostrils and nasal tip



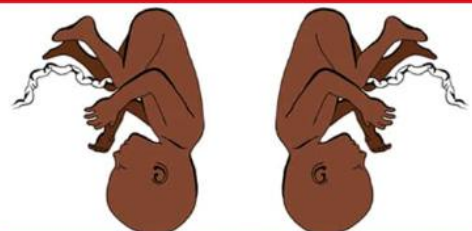
Plane 19
 Orbits and both lenses



Plane 20
 Facial profile



Sweep 1
 Longitudinal head and body for initial orientation

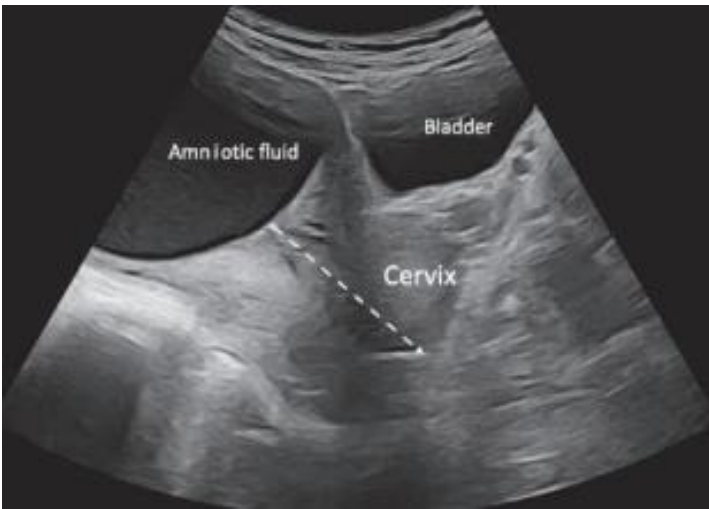


Cephalic with its back on the maternal left Its back on the maternal right



Breech Transverse

Sweep 2
 Transverse sweep of the body from neck to sacrum



Additional planes : AIUM 2013

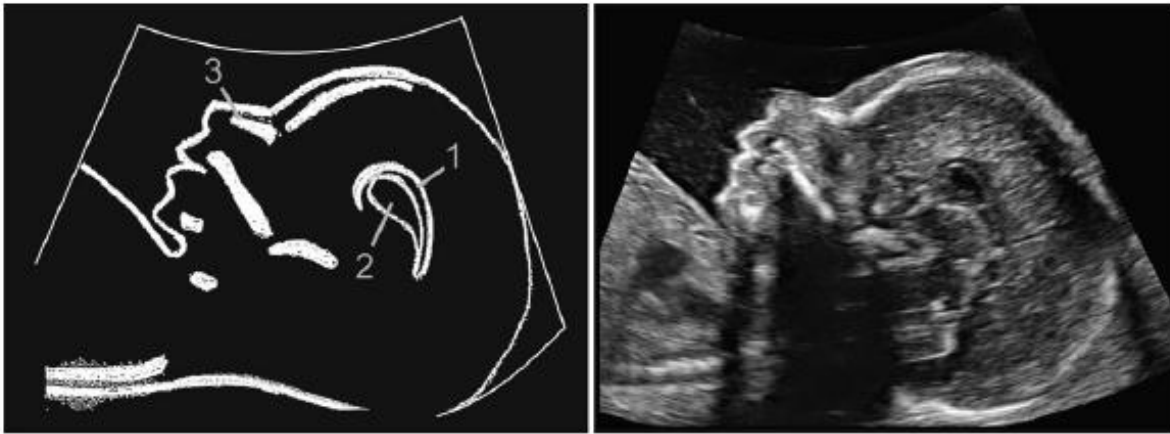


Figure 5: Corpus callosum.

- 1 Corpus callosum
- 2 Cavum Septum Pellucidum
- 3 Nasal bone



Figure 6: Coronal cerebellum.

- 1 Cerebellar lobe
- 2 Cerebellar vermis
- 3 Falx
- 4 Posterior horn of lateral ventricle
- 5 Cisterna magna

Additional planes : AIUM 2013

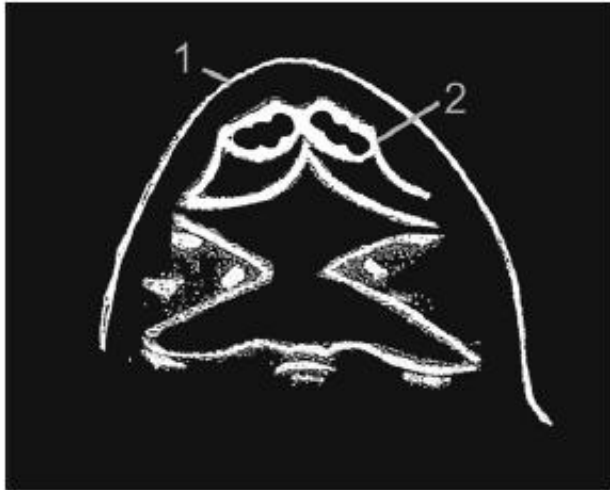


Figure 10: Upper lip and palate.

- 1 Upper lip
- 2 Hard palate.

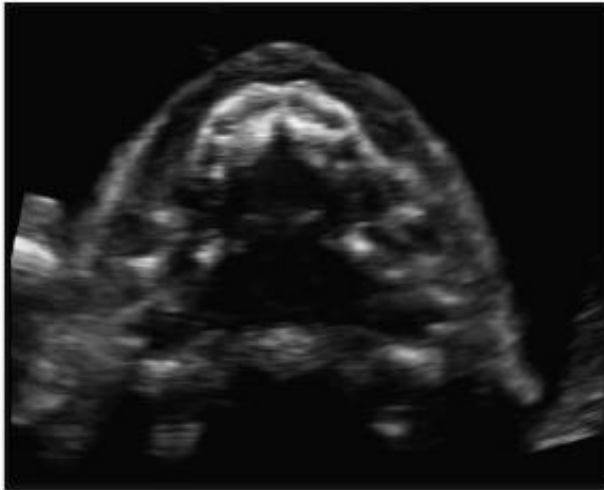
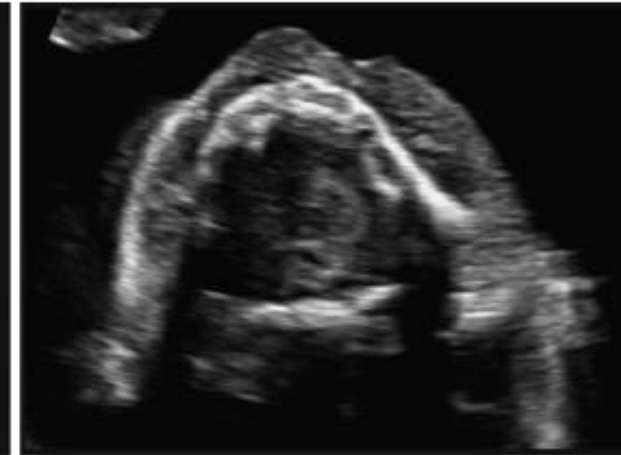


Figure 11: Lower lip and mandible.

- 1 Lower lip
- 2 Mandible



Transverse plane of the neck with the thyroid gland

Additional planes : AIUM 2013

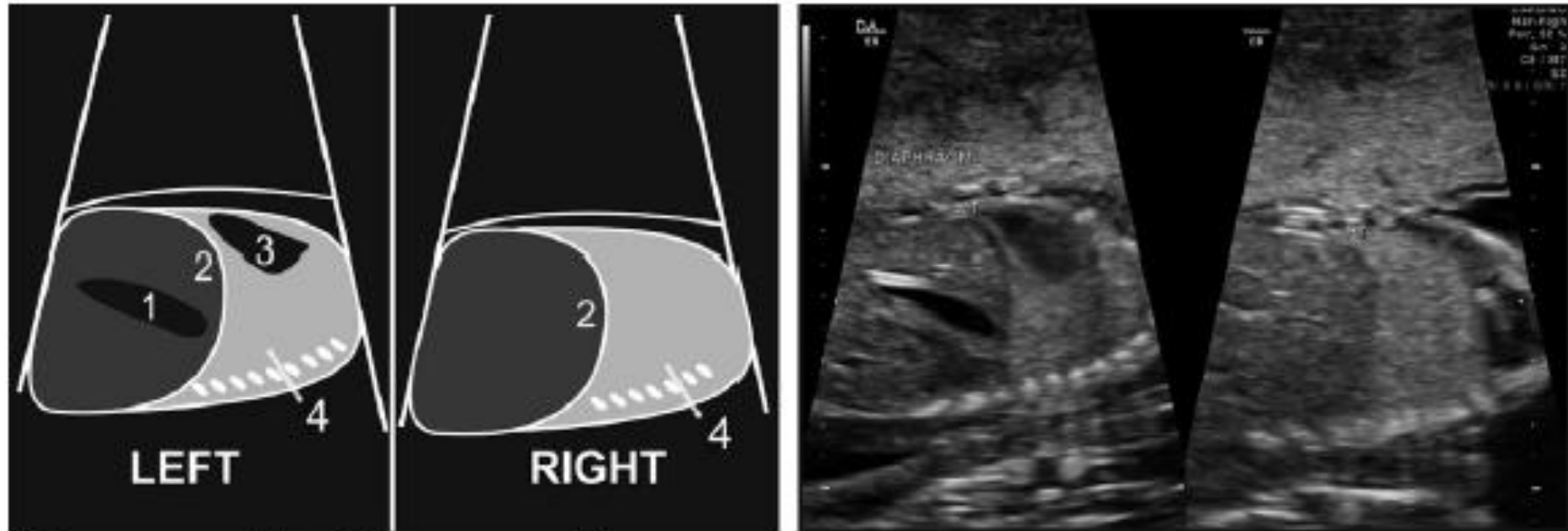


Figure 14: Diaphragm and lungs.

- 1 Stomach
- 2 Diaphragm
- 3 Heart
- 4 Lungs

Additional planes : AIUM 2013



Figure 50: Placenta and cord insertion.

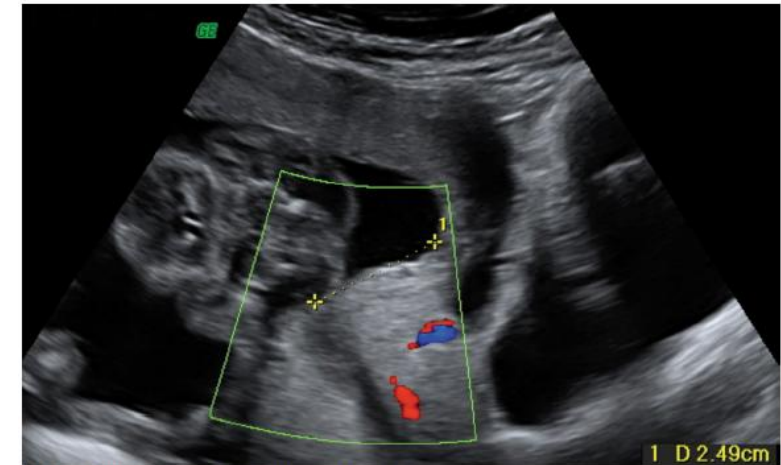


Figure 52: Doppler over the internal os.



Figure 51: Placental site and cervical length.

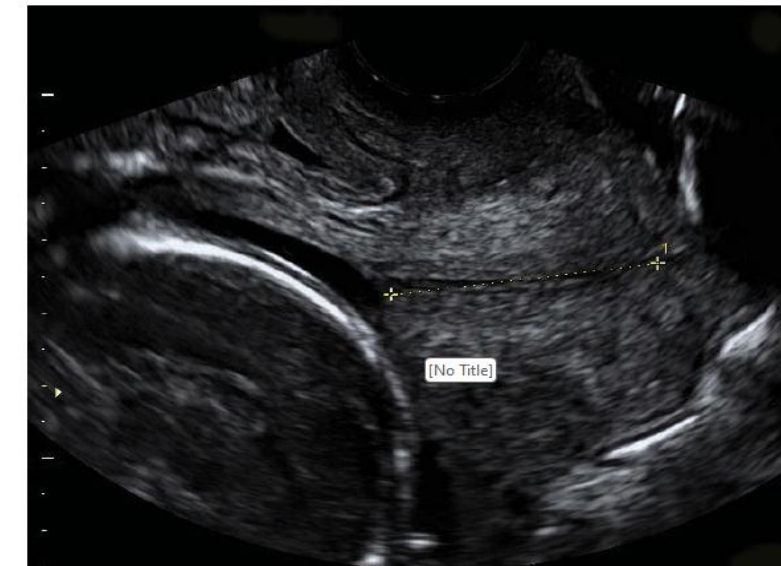


Figure 53: Transvaginal cervical length.

Additional planes : AIUM 2013

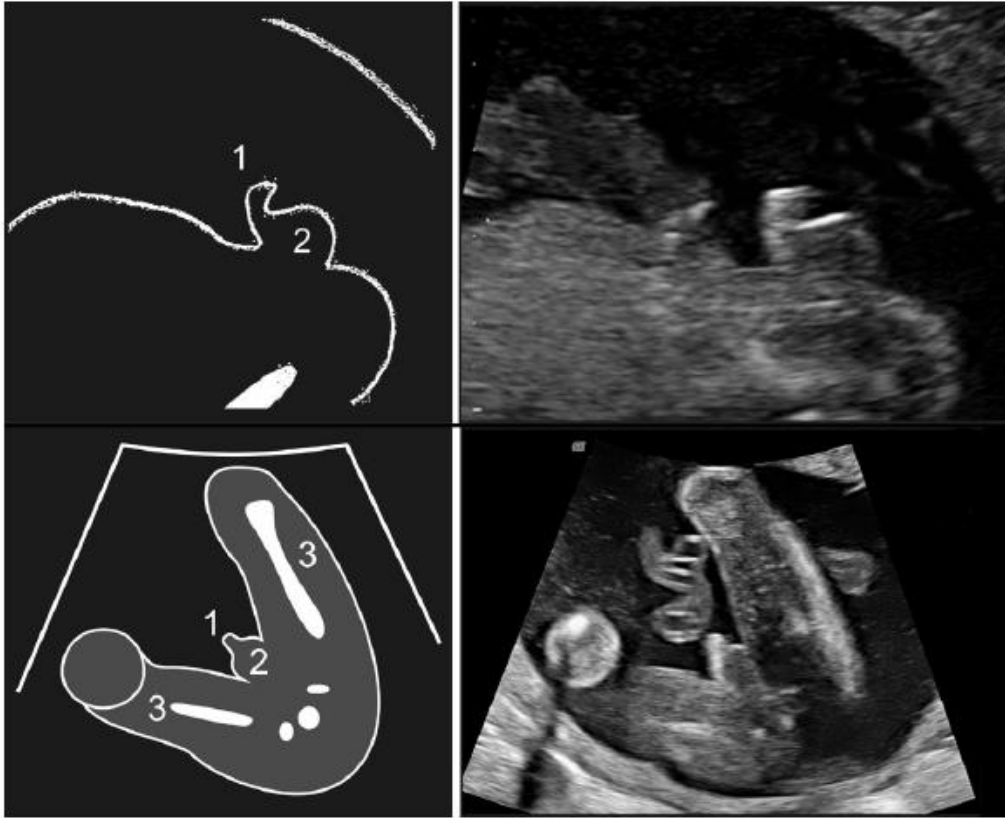


Figure 48: Male gender sagittal and axial.

The top image and diagram are mid sagittal and demonstrate the genitalia separate to the cord insertion. The bottom axial image and diagram confirms the presence of penis and scrotum between the legs.

- 1 Penis
- 2 Scrotum
- 3 Leg



Figure 49: Female gender sagittal and axial.

The top image and diagram are mid sagittal and demonstrate the flat mons pubis below the cord insertion. The bottom axial image and diagram show the three lines of the labia.

- 1 Bladder
- 2 Mons pubis
- 3 Umbilical cord
- 4 Labia
- 5 Thigh

Additional planes : AIUM 2013

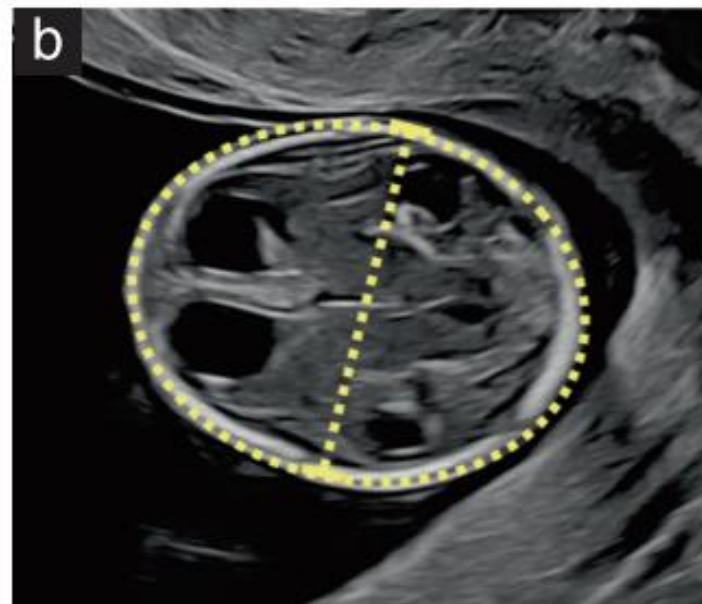
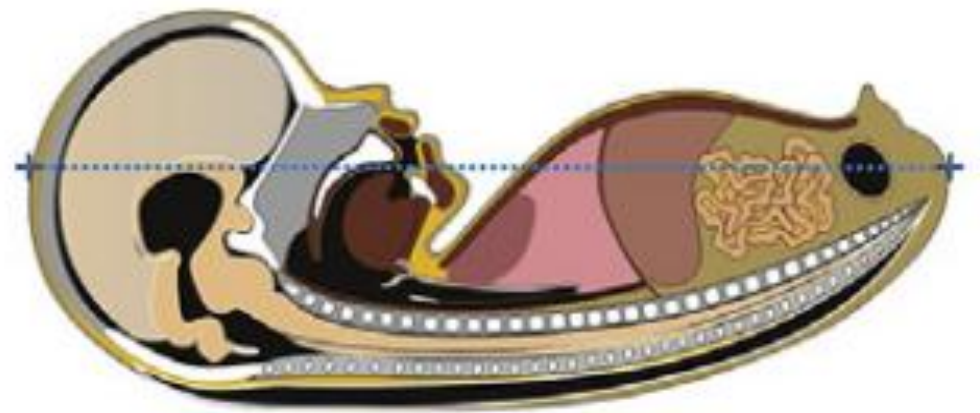
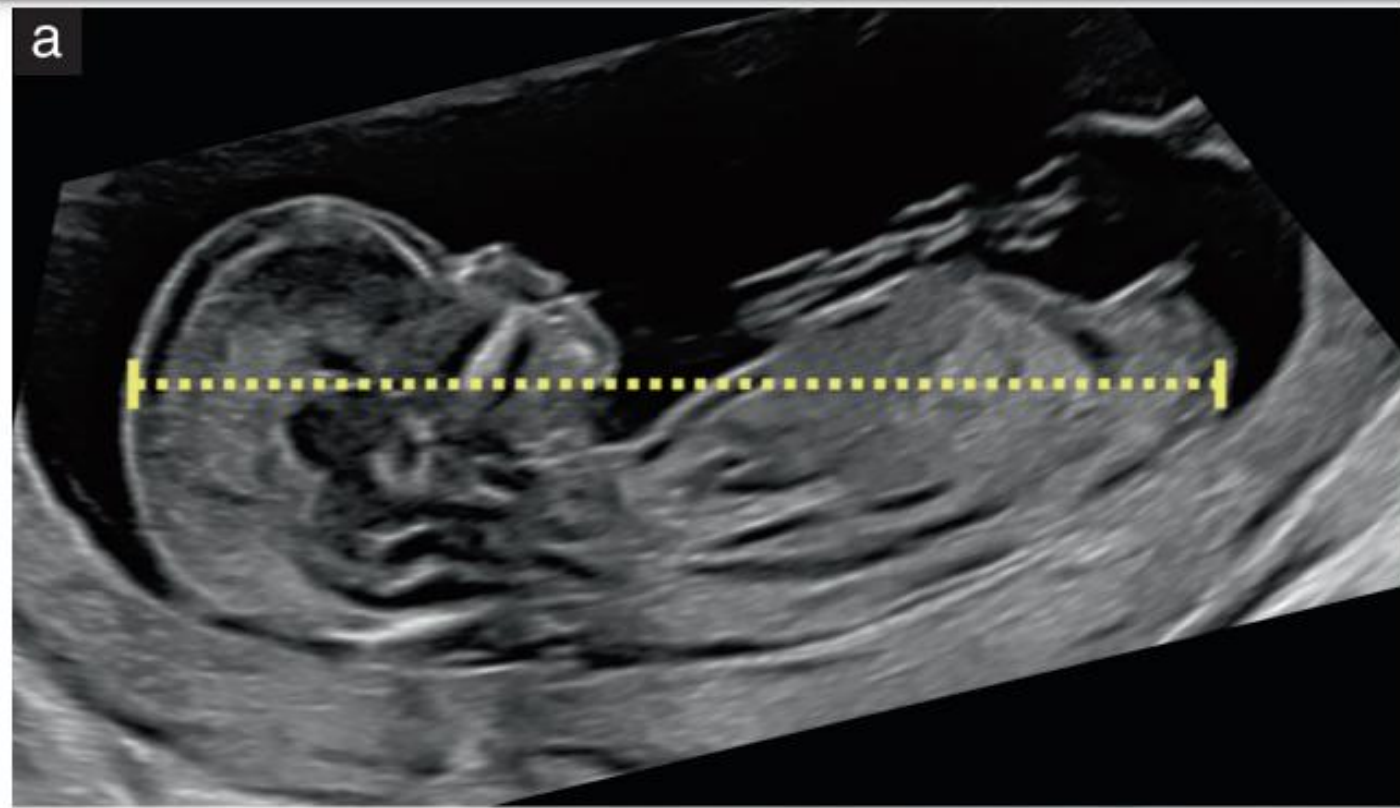




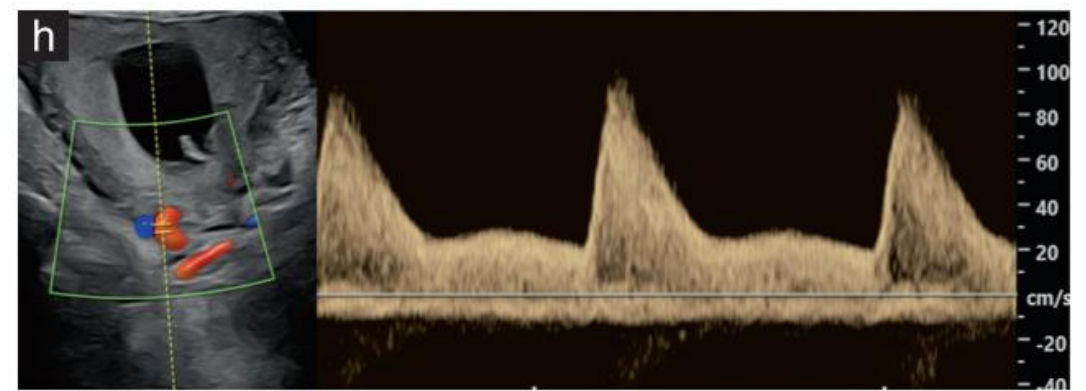
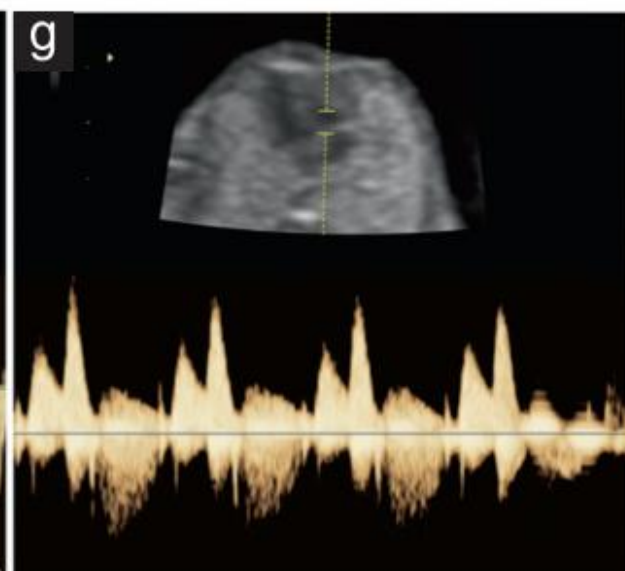
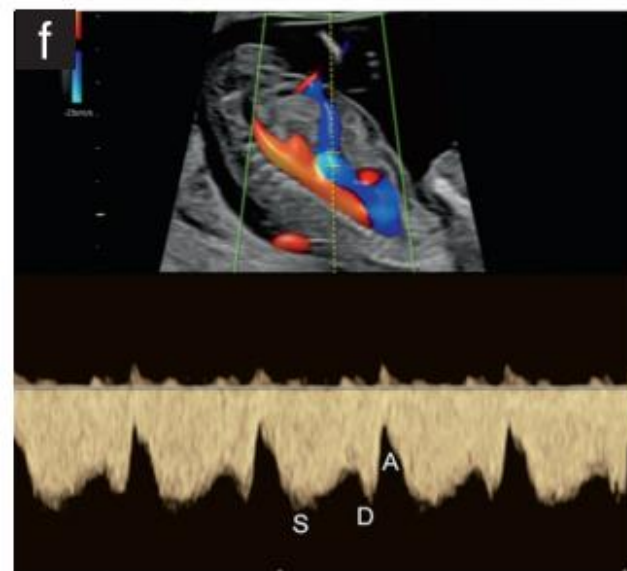
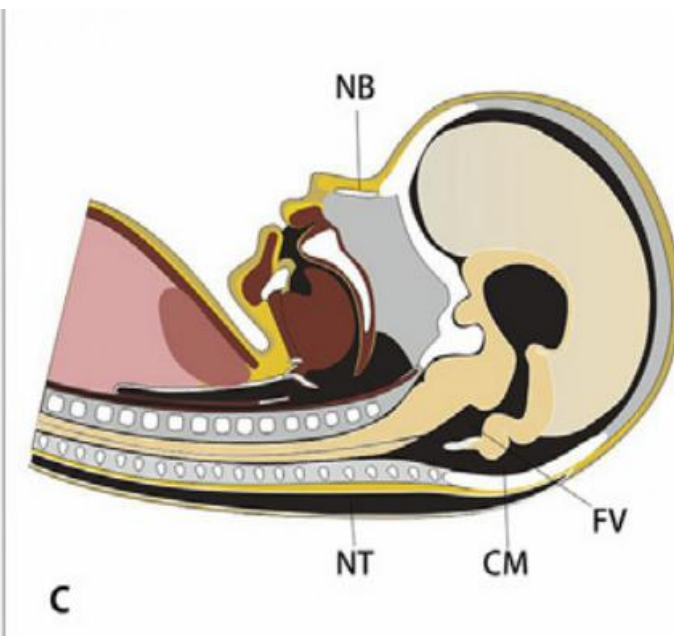
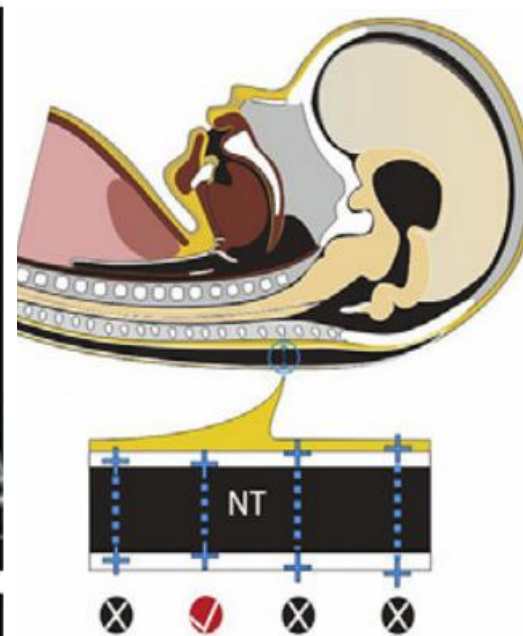
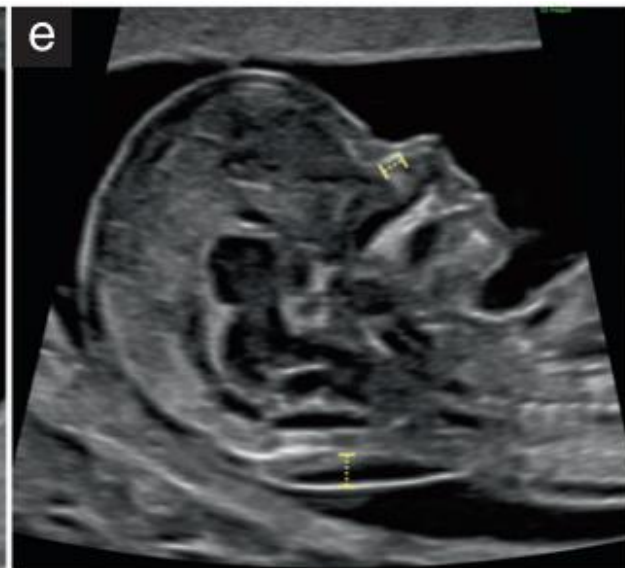
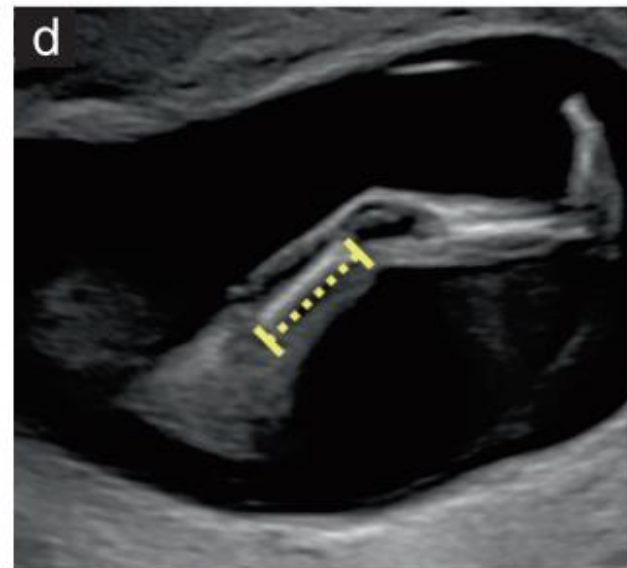
GUIDELINES

ISUOG Practice Guidelines (updated): performance of 11–14-week ultrasound scan

11–14-week ultrasound scan



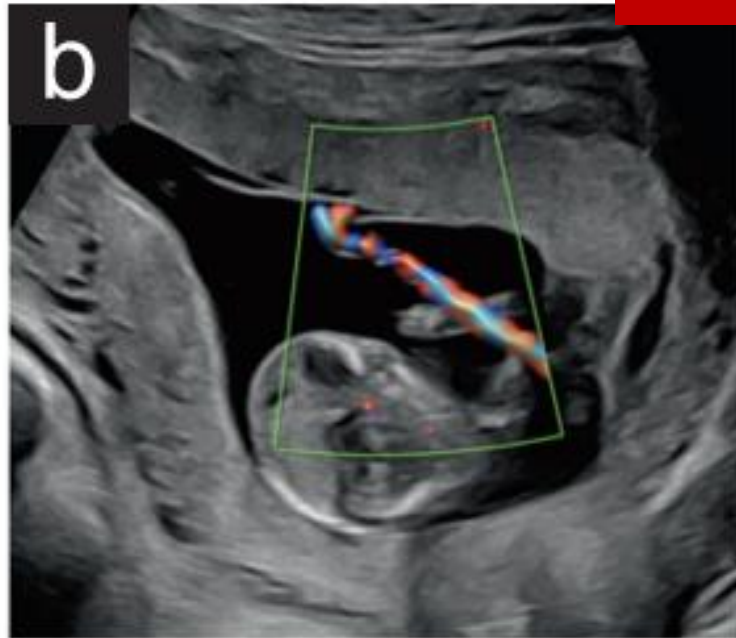
11–14-week ultrasound scan



a



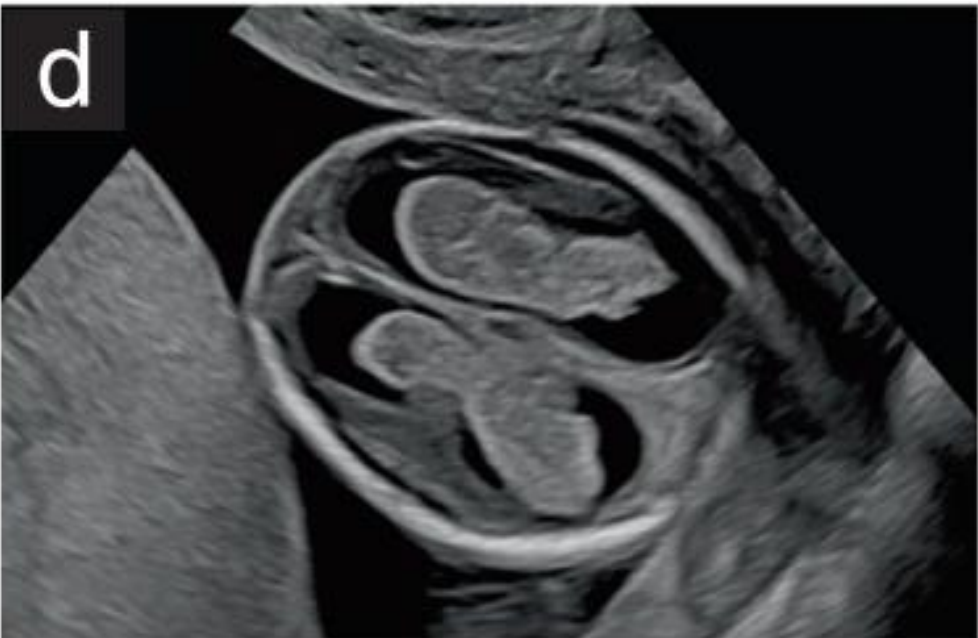
b



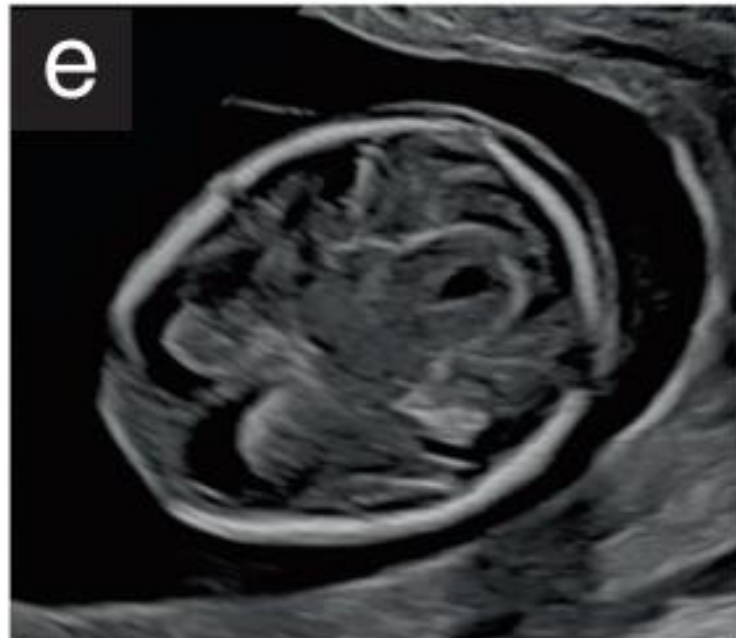
c



d



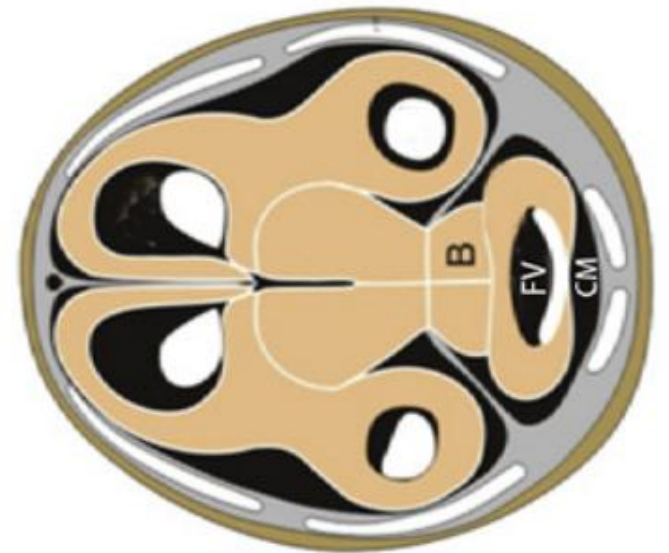
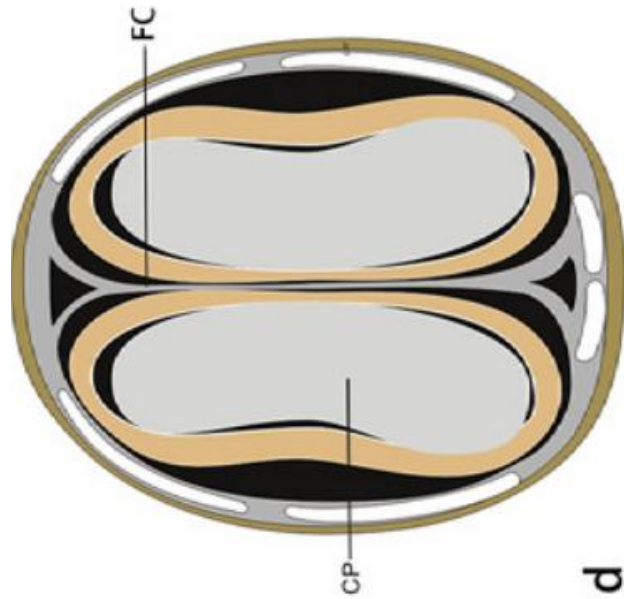
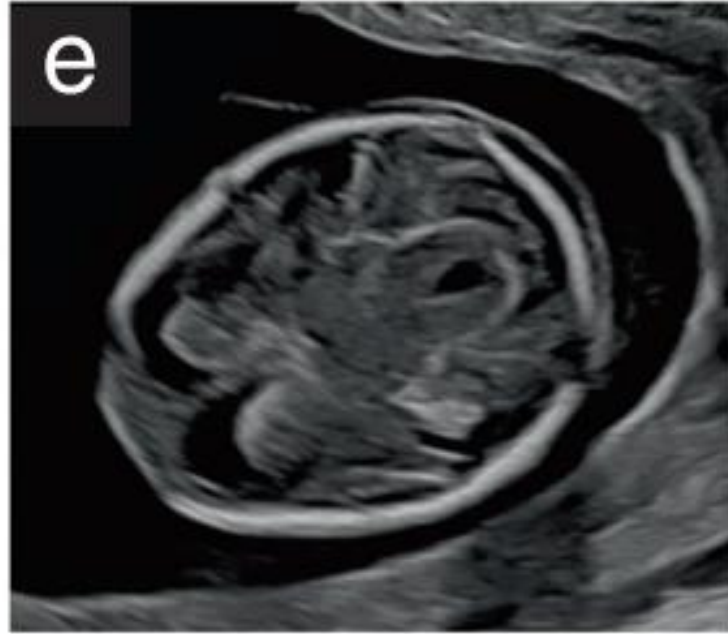
e



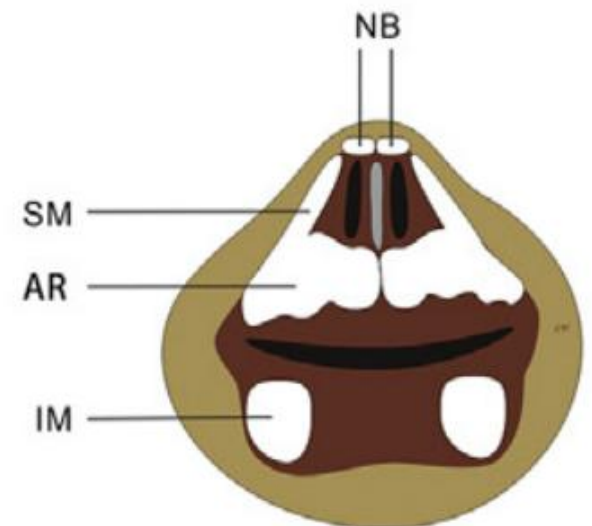
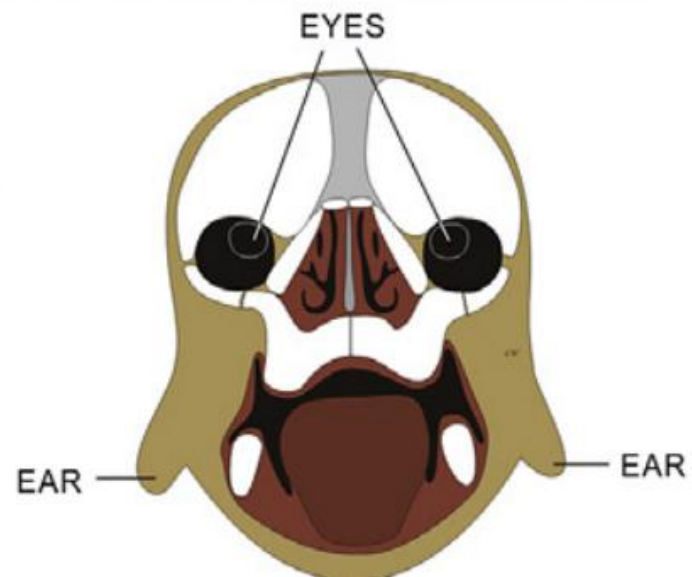
f



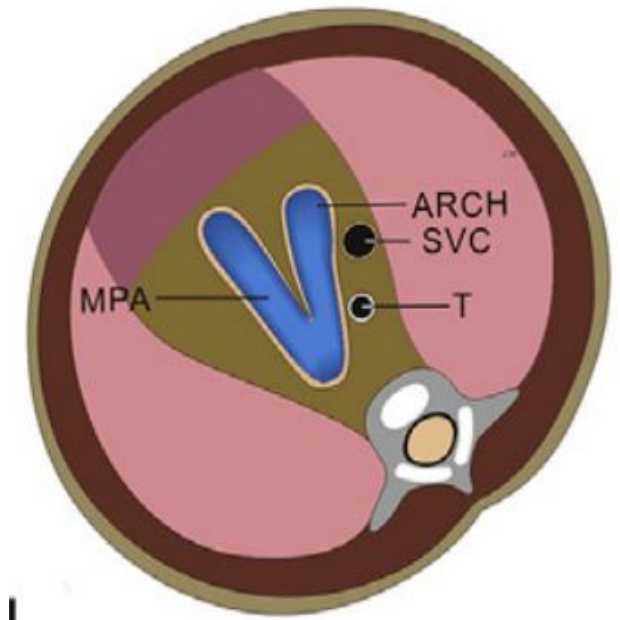
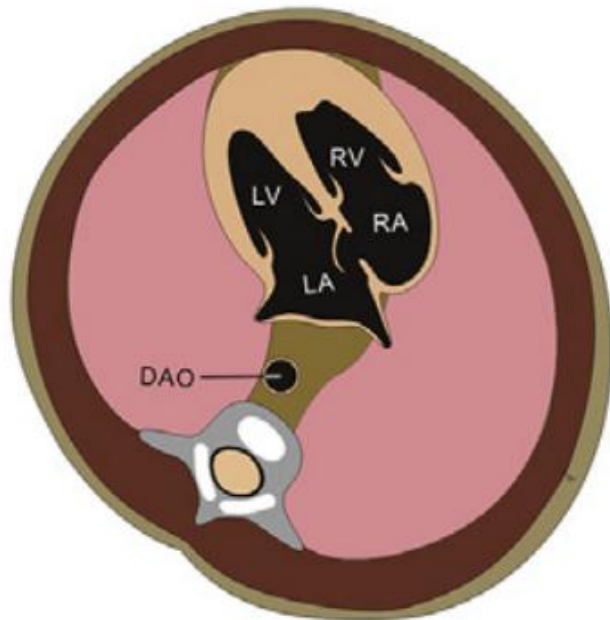
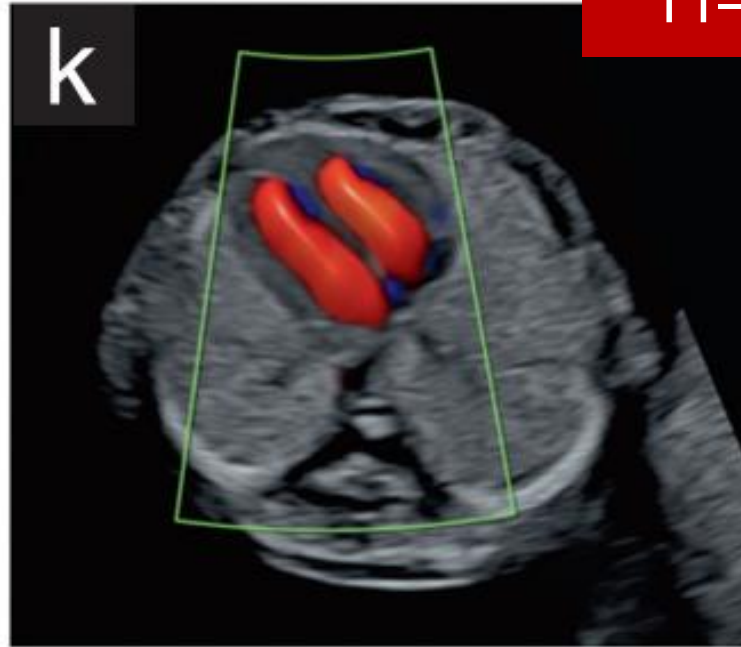
11–14-week ultrasound scan



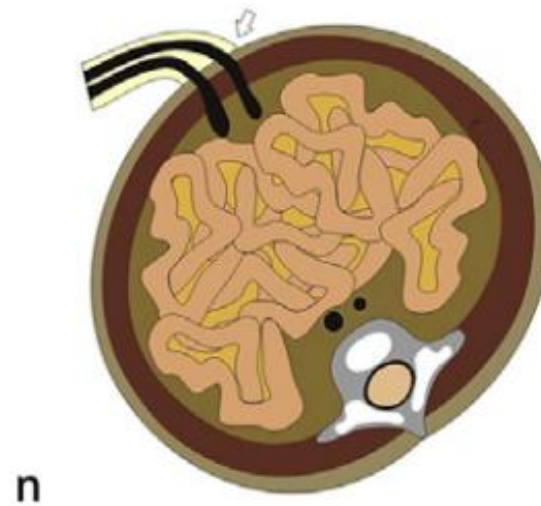
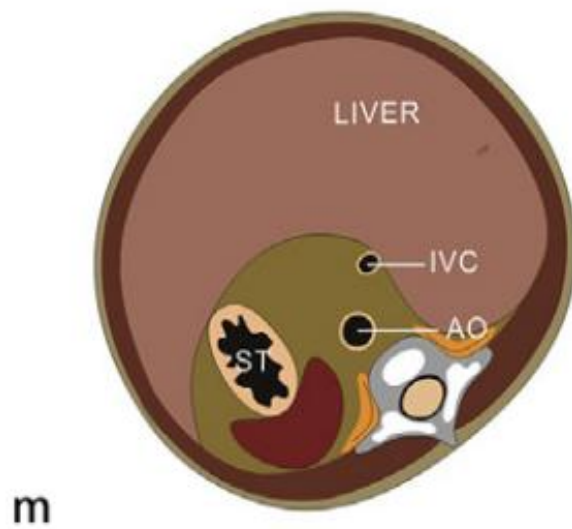
11–14-week ultrasound scan



11–14-week ultrasound scan



11–14-week ultrasound scan



11–14-week ultrasound scan

